

2025

BUSINESS **CATALOG**

2025-2026 SEASON



www.agdtrade.com.tr

World Wide Business



WHO ARE WE?

AGD, pergola, awning, plastic parts and metal parts production
It is among Turkey's leading companies in its sector. It is one of the strongest and fastest growing companies in the industry.

Thanks to our products and quality, we are successfully recognized throughout Türkiye. With our quality product range, we ship products to many countries around the world.

AGD has a rapidly growing network of partners and sales points worldwide. It constantly seizes new opportunities for profitable growth.

Our products provide different designs and practical use; It is as close to you as your order. With our expert team, we are aware of the innovations and developments that the world needs. We devote all our time to product development and providing benefits.



Our Mission and Vision

Our place among Turkey's leading companies in our sector,
We continue to increase our quality and bring it to the same level in many countries of the world. We want to offer this Quality to the world.

Currently, we provide quality services to more than 100 customers in 33 countries on 4 continents. and we provide trouble-free service.

The quality and reliable service approach that we have maintained from past to present We want to continue our growth target steadily by developing it further.

Customer satisfaction, healthy communication, on-time delivery and All our features that enable us to strengthen our workforce We aim to protect and develop.

■ WE PRODUCE FOR TURKIYE AND THE WORLD

Our company, which has been serving in this sector for many years, offers various shading services.

Metal, plastic, etc. required for shading systems manufactures belts and other accessories.

With our priority of superior quality and reasonable price,
We offer the best to the consumer.



■ WITH OUR WIDE RANGE OF PRODUCTS...

Pergola, Rolling Roof, Bioclimatic and Guillotine Glass Systems sales and sales of all living space and shading systems, including We offer after-sales support service. Both at home and abroad What our system manufacturer partners need; aluminum profiles, glass, plastic and metal accessories and timing belt products we supply.











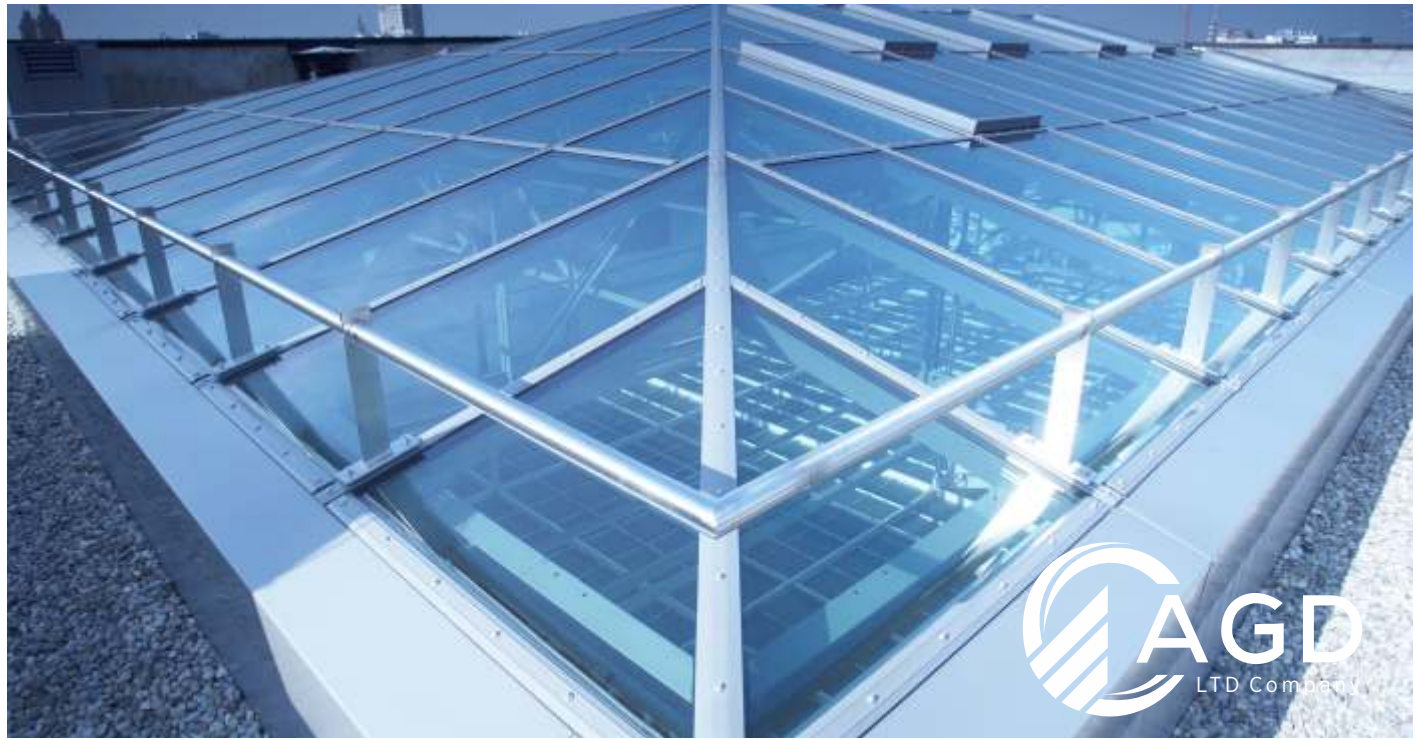


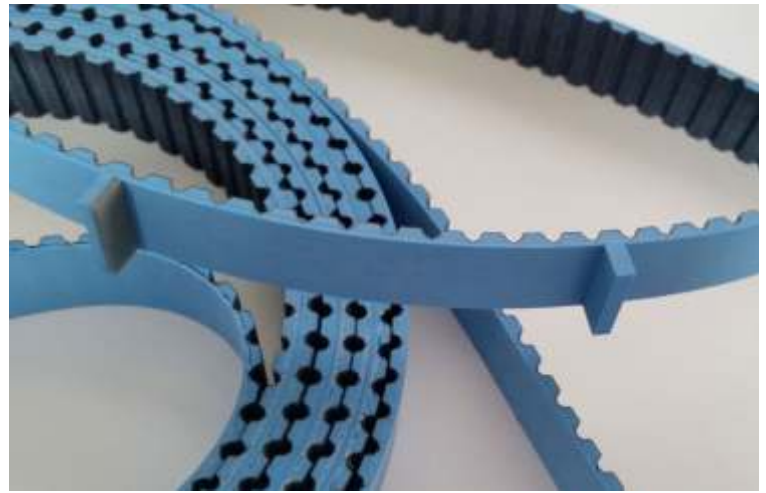




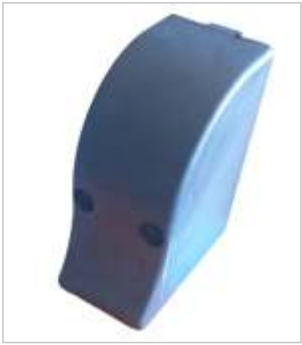












**70'S RAIL HEAD
PERFORATED**



70'S RAIL HEAD



**90'S RAIL HEAD
PERFORATED**



90'S RAIL HEAD



110'S RAIL HEAD



**100 X 100
SHOE**



**110 X 145
SHOE**



**150 X 120
SHOE**



**LUXURY GUTTER
SIDE COVER SET**



**OCTAGONAL
PIPE HEAD**



**PERGOLA & GUILLOTINE
ENGINE PIPE HEAD**



**ALUMINUM ENGINE
HEAD**

METAL ACCESSORIES

We produce metal parts required for shading systems, Pergola, Bioclimatic, Rolling Roof systems and Winter Garden systems.



PERGOLA 70-90
RAIL CONNECTION SHEET
IMPERFORATE



PERGOLA 70-90
RAIL CONNECTION SHEET
PERFORATED



PERGOLA 16X16
SQUARE AUTOMAT



M8X12 MM
NUT SCREW SET



BIOCLIMATIC PERGOLA
PANEL WHEEL



CORNICE FIXING
SHEET 2



GUTTER APPARATUS



110'S CONNECT APR.



70-90-110'S RAIL
WALL HANG SHEET



70-90-110'S RAIL
CONNECT SHEET



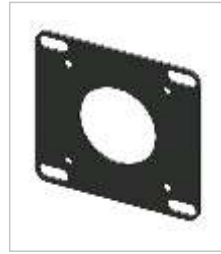
PERGOLA TRAPEZ
CONNECT APPARATUS



PERGOLA GUTTER
COVER



PERGOLA ENGINE
CONNECT SHEET



100" COLUMN
GUTTER CONNECTION



100X100 COLUMN
GUTTER CONNECTION



PERGOLA 70-90-110
HANGER SHEET



ALUMIN SOMFY
ENGINE APPARATUS



WINTER GARDEN
APPARATUS



WINTER GARDEN
APPARATUS



WINTER GARDEN
APPARATUS



HANG SHEET



HANG SHEET



RAIL WALL HANG
SHEET - 3



70-90-110'S RAIL
CONNECT APPARATUS



**SMALL PULLING
WHEEL**



**BIG PULLING
WHEEL**



**BIG PLASTIC
BEARING**



**SMALL PLASTIC
BEARING**



**THIN CORNICE
COVER**



**THICK CORNICE
COVER**



**GUTTER PLASTIC
APARATUS**



REAR CAGE SET



**MOSEL ENGINE
APPARATUS**



**PERGOLA ENGINE
APPARATUS**



**PLASTIC FABRIC
HOLDER**



MENGINE COVER



**PERGOLA THIN
CORNICE MIDDLE
PUSHER**



**PERGOLA THIN
CORNICE EDGE
PUSHER**



**PERGOLA THICK
CORNICE EDGE
PUSHER**



**PERGOLA THICK
CORNICE MIDDLE
PUSHER**



PLASTIC TIPE



**FABRIC
TENSION
PLASTIC**



**PLASTIC GUTTER
CONNECTION**



**PLASTIC RAIL
HEAD 70-90's**



TIMING GEAR



WHEEL SEAL



**TRIGER CONNECTION
APPARATUS**



**RAIL TENSION
APPARATUS**

WITH OUR WIDE RANGE OF PRODUCTS...

Pergola, Rolling Roof, Bioclimatic and Guillotine Glass Systems sales and sales of all living space and shading systems, including We offer after-sales support service. Both at home and abroad What our system manufacturer partners need; aluminum profiles, glass, plastic and metal accessories and timing belt products we supply.

Mail: info@agdticaret.com

Web: www.agdtrade.com.tr





AGD

LTD Company